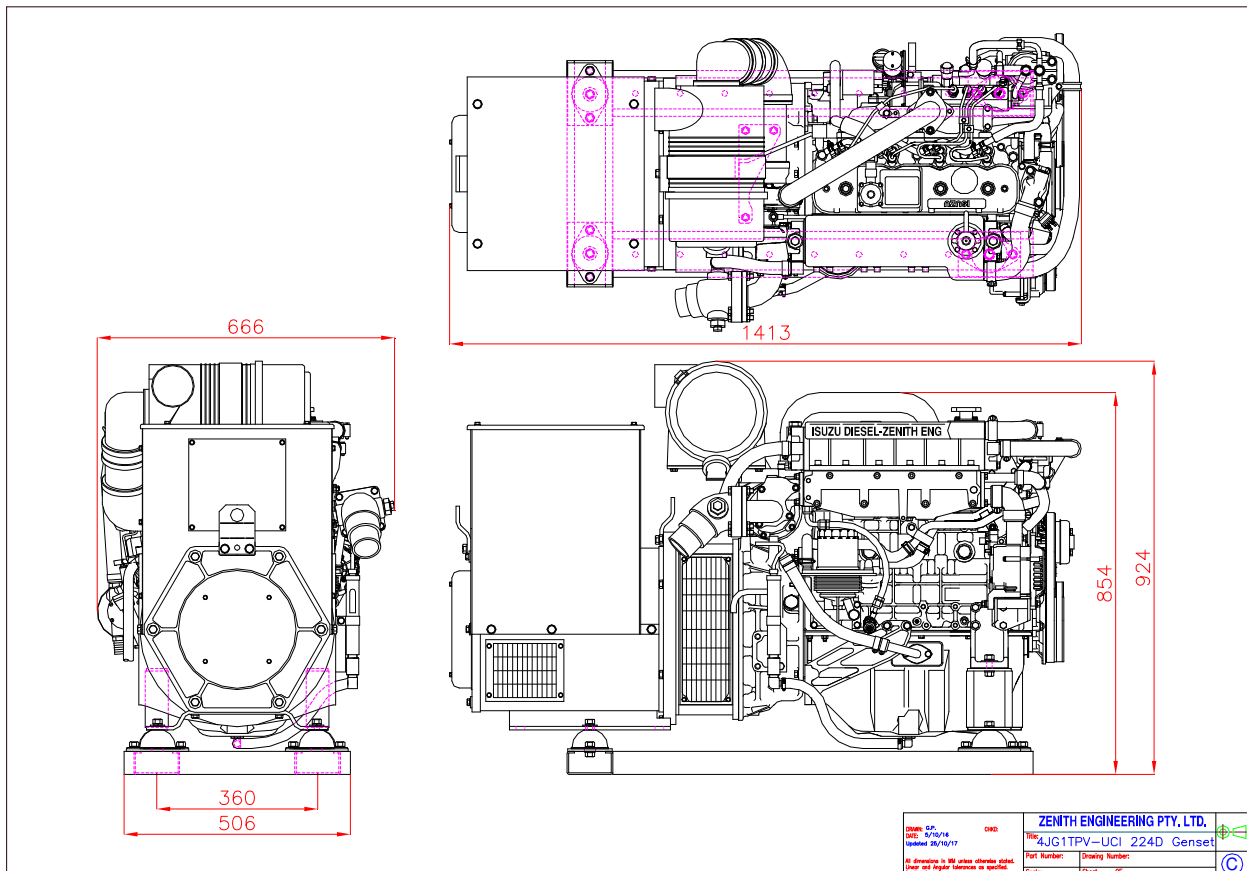


## Marine Gen.Set – 45kva three phase – Stamford

Approx Weight – 626 kg

This unit comprises the following:

- Isuzu Diesel Model 4JG1 TPV, turbocharged, 4 cyl., 3059cc, with Isuzu Australia warranty
- Stamford AVR Control Alternator, model UCI 224D
- Engine is available fully marinised, or with water cooled manifold and keel cooling kit
- Fitted and wired with start/stop control panel
- Auto shutdown protection for high water temp/low oil pressure
- Sump drain facility with manual sump pump fitted
- Set up on powder coated frame, with quality resilient mounts
- Painted marine white
- Unit load tested prior to delivery
- Includes spare Genuine Isuzu fuel & oil filters, engine workshop manual, cooling system inhibitor concentrate, and spray can of touch up paint
- This engine/alternator combination is capable of producing an output of 40kva three phase at 1500rpm



Zenith Engineering Pty. Ltd. \* 16 Crombie Street \* Milton 4064 \* Australia

Phone(07)33694599 \* Fax(07)33690459 \* Email:info@zenith.net.au \* Web: www.zenith.net.au